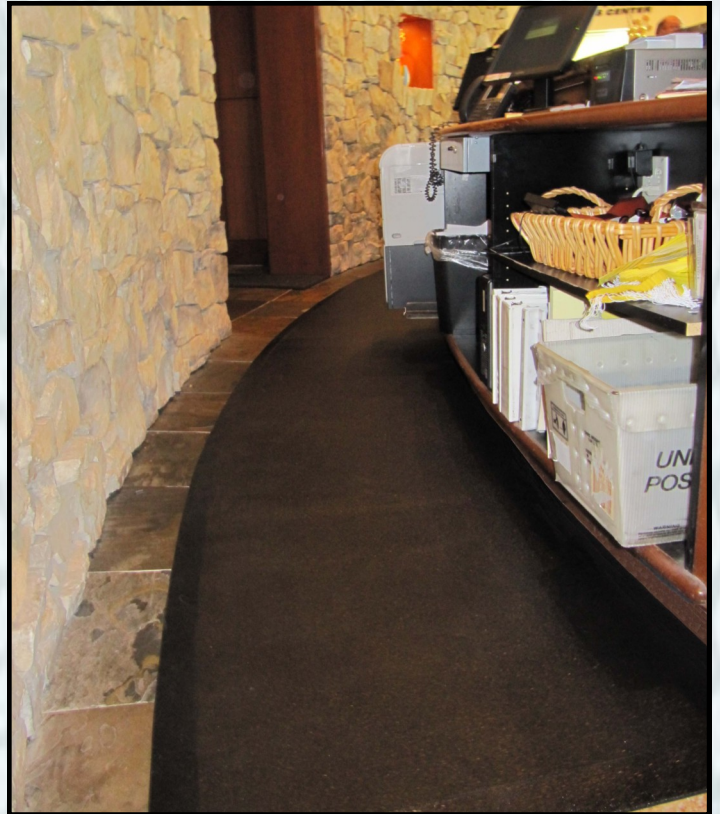


# Ortho TUFF Skin

Introducing the  
*revolutionary*, indestructible,  
Ortho **TUFF Skin** mat.

The world's leading anti-fatigue matting and one of the most durable coatings in existence combine to give you one of the most unique mats on the market today; *making this the last mat you will **EVER** buy!*



## **Features:**

- Ultra durable top coat
- Seamless top coat to avoid mat separation and tripping
- Manufactured with virgin Ortho Mat closed cell NBR sponge
- Works best in dry applications
- Easy to clean surface
- Chairs & carts roll over this mat with ease
- Non-allergenic, latex, and silicone free
- Ortho TUFF Skin Mats are complete with a 2" safety bevel on all sides for ease of cart traffic & added safety

## **Benefits:**

- Immediate increase in productivity and employee morale due to workplace comfort
- Guaranteed increased reduction of exposure to prolonged cold, heat, and vibration
- Ergonomically designed to guarantee reduction of back, leg, foot, and ankle fatigue
- Promotes employee wellness
- Reduces spinal compression

*Patent Pending*



American Made  
Ergonomically Designed

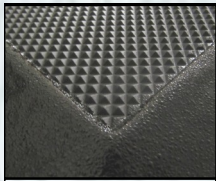
# Rubberize Your Floors With These Available Sizes

<u>Part #:</u>	<u>Size:</u>	<u>List Price:</u>	<u>Weight:</u>
PTMOTS243634	2' x 3' x 3/4"	\$ 66.50	4.50 lbs.
PTMOTS363634	3' x 3' x 3/4"	\$100.00	6.75 lbs.
PTMOTS364834	3' x 4' x 3/4"	\$133.00	9.00 lbs.
PTMOTS366034	3' x 5' x 3/4"	\$166.50	11.25 lbs.

## Let Your Imagination Run Wild...

This amazing flooring product can be fabricated to any shape or size

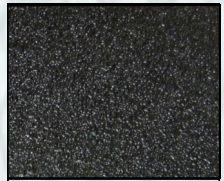
Please submit drawing with dimensions and beveling specifications to your local Rep. for a *custom* quote, Approx. \$11.50/sq. ft.



Anti-Slip Surface

Yellow or Red 2" safety borders available

\$2.00 per lin. ft. on standard sizes; \$4.00 per lin. ft for custom mats



Standard Surface

### Start improving safety & productivity in the following areas:

- Industrial work cell/stations
- Hotel front end departments
- Security & ticket booths
- Cashier & counting cages
- Gyms & golf service areas
- Table top mats
- Stand up forklift pads
- Equipment box liners
- And *many* more applications!

### Top surface options:

- TUFF Skin protective coating available in black, red, yellow, and dark gray.
- Other TUFF Skin coating colors available in large quantities with extended lead times.

### Non-slip properties:

- The anti-slip surface is excellent for wet & dry applications.
- The standard surface is used for dry applications only.

### Customize your Ortho TUFF Skin Mats:

- Custom sizes, shapes, and die cut pieces available. Have your supply rep. submit your diagram for a factory quote. Custom mats are subject to a longer lead time.

### Flooring:

- Wall to wall Ortho TUFF Skin flooring should be ordered over-size and cut to fit on location to match exact room dimensions.

### Cleaning:

- Easy to clean surface.
- For disinfectant cleaning follow your normal protocol.

### Warranty:

- The Ortho TUFF Skin Mat is guaranteed against defects in materials and workmanship for 2 years, *including* premature wear.  
\* Pro-Rated based on conditions of use.
- Life expectancy 5-8 years.

### Guarantee:

- The Ortho TUFF Skin mat is endorsed by Chiropractors & Orthopedic Surgeons.
- Ortho TUFF Skin Mat welcomes the opportunity to be compared. We will proudly provide samples for testing.

Please Note: Ortho TUFF skin Mat has been specifically designed to reduce the risk of slips and falls, while increasing safety and comfort in the workplace. Pro-Tech Mats Industries, Inc. accepts no responsibility for damages involving the use of our products. No product can guarantee that accidents will not happen. Suitability to task and operations in all aspects must be determined by the user of the mat.

### Also available:

Ask your Supply Rep. about the full line of Ortho Mat products including Ortho 1, Ortho 2, ESD, Anti-Slip, Duro, Ortho TUFF Skin Interlocking Tiles, & Ortho TUFF Skin Professional Salon Mat.

## **ORTHO MAT®**

Proudly Distributed By:

The TUFF Skin mats should NOT be rolled backward or folded; ALWAYS flip mat upside down & then roll with the top side out. Never leave objects over 20 lbs. on the mat for more than 24 hours. The TUFF Skin mat is not meant for repeated narrow based high heel usage and may become damaged. Never weld on the TUFF Skin Mat.